
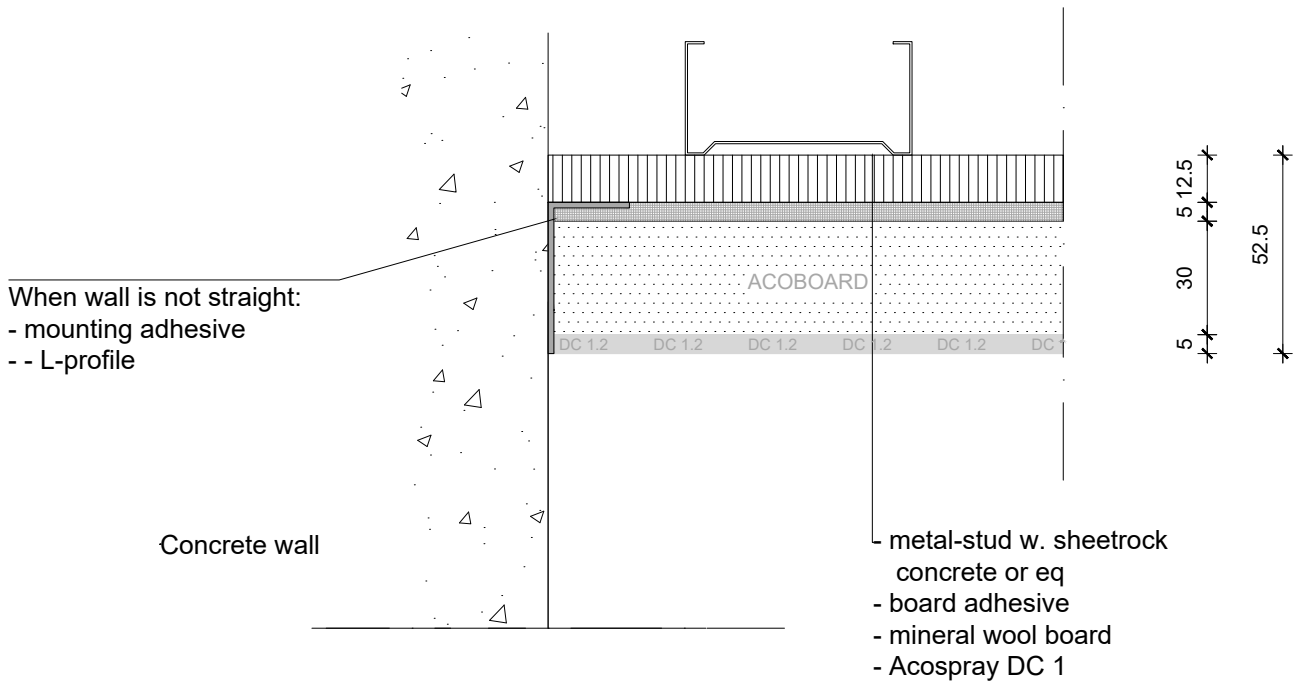
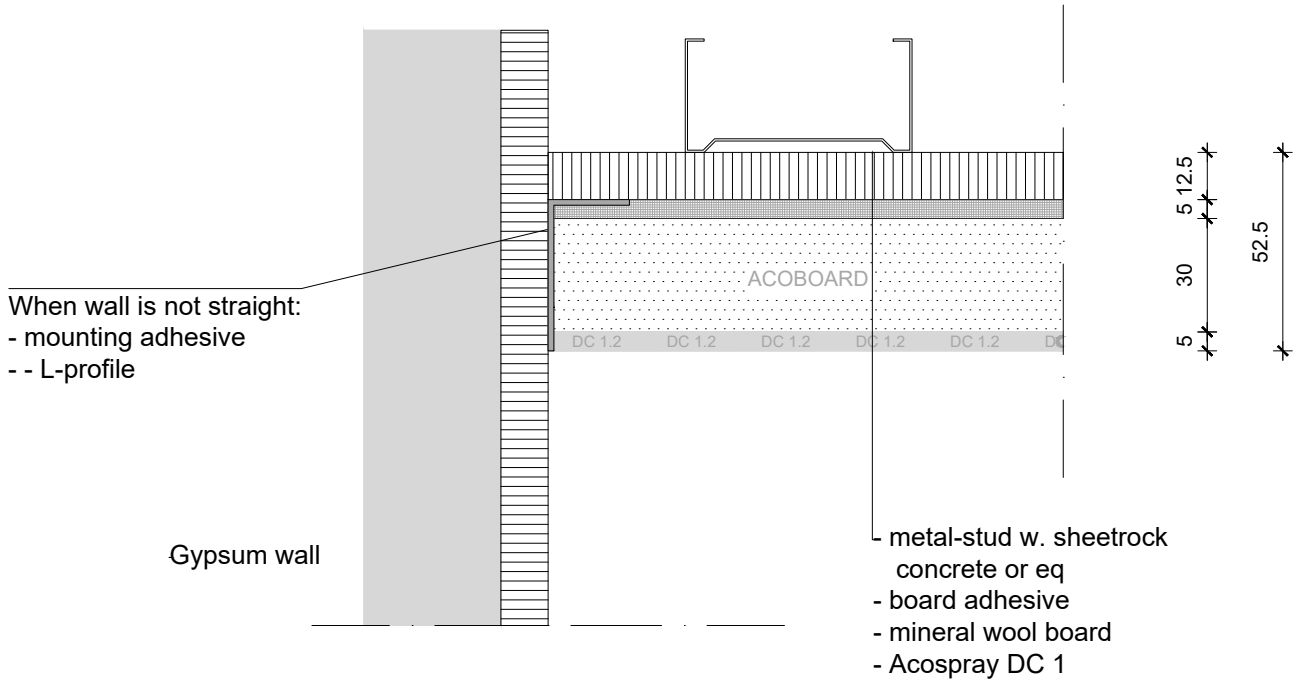


NOTE:

- Acosorb products always need to be applied accordingly to the instructions by Acosorb on clean, dry and non expanding surfaces like concrete, gypsum or eq
Dimensions of profiles and other products depends on the applied thickness of Acosorb product.


Product:	ACOSPRAY DC1 2.0 STANDARD ENDING	Date:	V1.0 2019	info@acosorb.com
Scale:	1:2	Drawn by:	ACOSORB	WWW.ACOSORB.COM
Papersize:	A4			 seamless acoustical spray- and plasterwork

* These details are basic principle drawings. This drawing does not function as or will replace any execution drawings.
The client or contractor is responsible for the correct application of the product. All dimensions need to be checked by client or contractor.

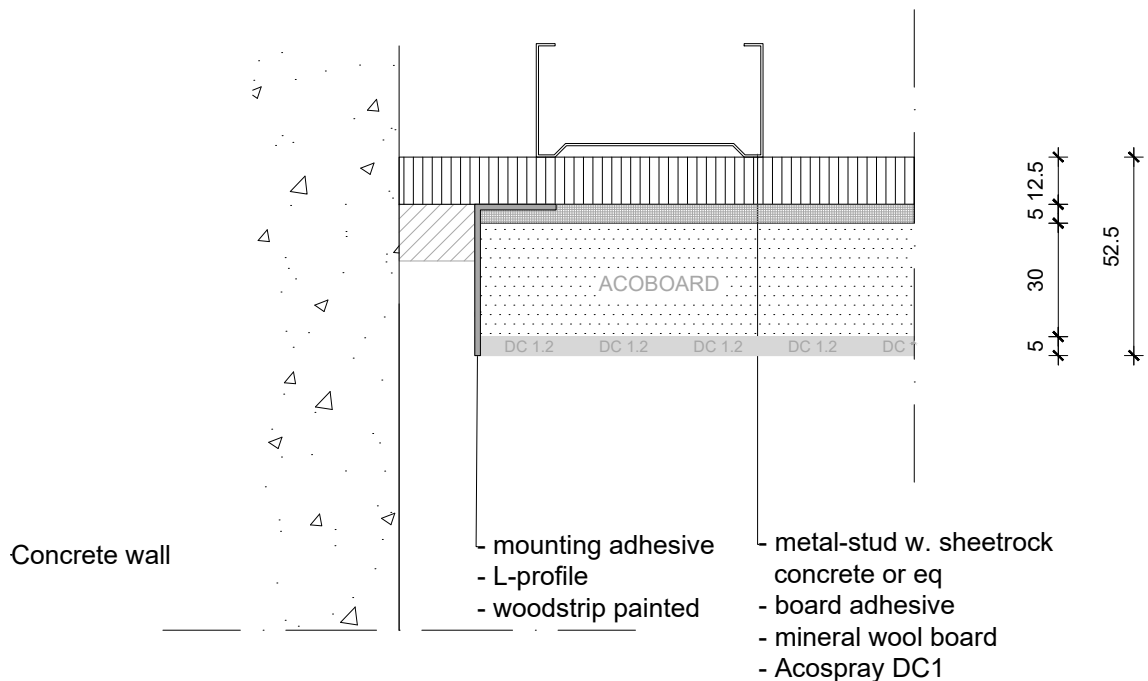
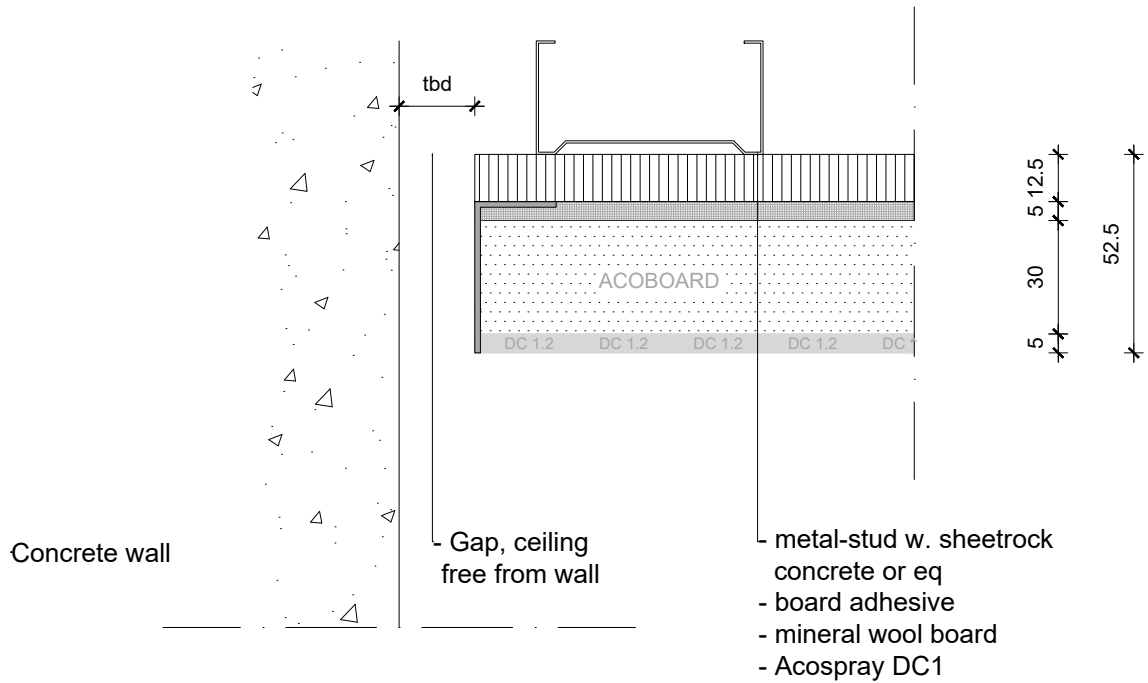


NOTE:

- Acosorb products always need to be applied accordingly to the instructions by Acosorb on clean, dry and non expanding surfaces like concrete, gypsum or eq
 Dimensions of profiles and other products depends on the applied thickness of Acosorb product.


Product:	ACOSPRAY DC 1 2.0 WALL CONNECTION	Date:	V1.0 2019	info@acosorb.com
Scale:	1:2	Drawn by:	ACOSORB	WWW.ACOSORB.COM
Papersize:	A4			 seamless acoustical spray- and plasterwork

* These details are basic principle drawings. This drawing does not function as or will replace any execution drawings.
 The client or contractor is responsible for the correct application of the product. All dimensions need to be checked by client or contractor.

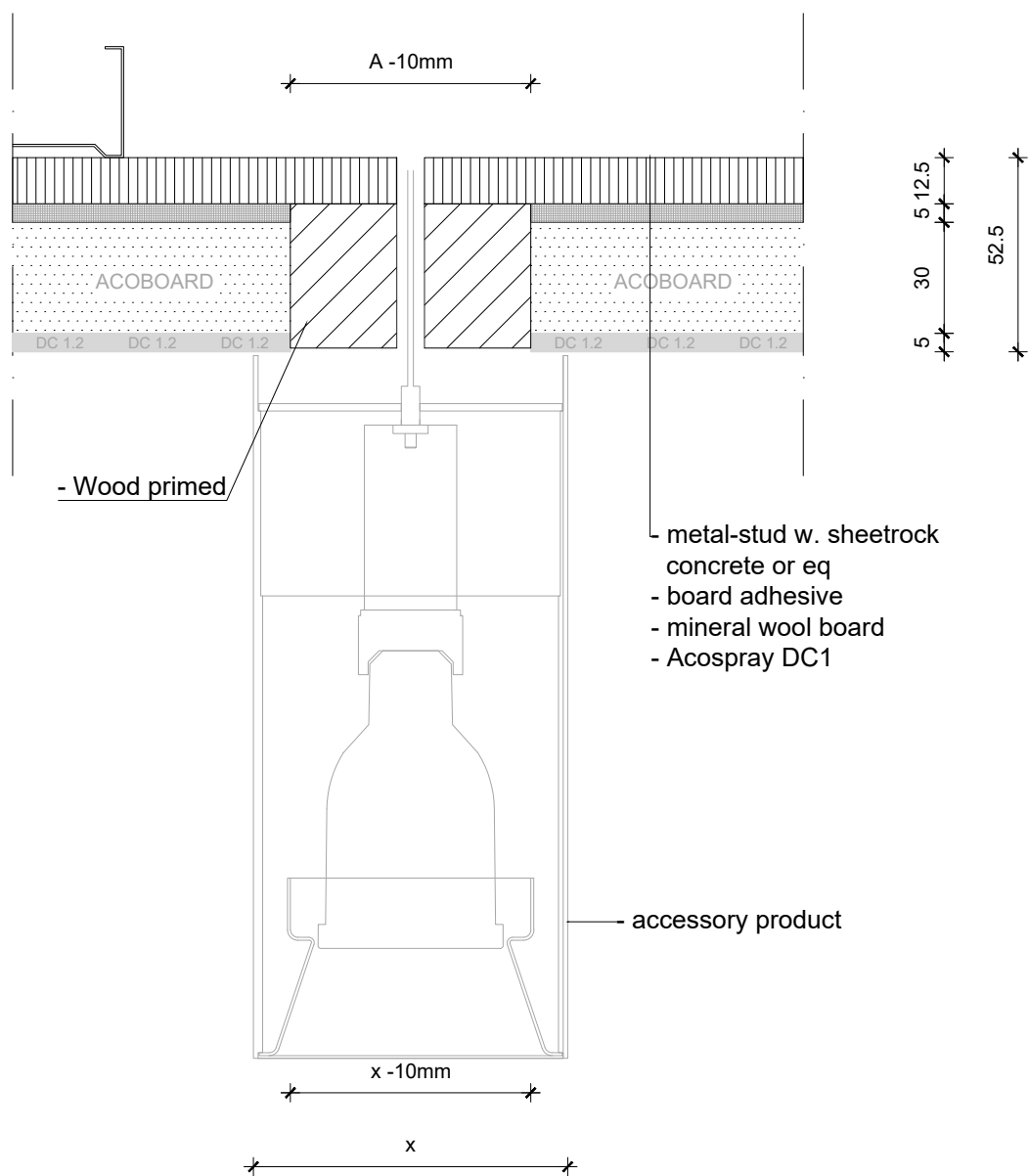


NOTE:

- Acosorb products always need to be applied accordingly to the instructions by Acosorb on clean, dry and non expanding surfaces like concrete, gypsum or eq
Dimensions of profiles and other products depends on the applied thickness of Acosorb product.


Product:	ACOSPRAY DC 1 2.0 WALL/SHADOW JOINT	Date:	V1.0 2019	info@acosorb.com
Scale:	1:2	Drawn by:	ACOSORB	WWW.ACOSORB.COM
Papersize:	A4	 seamless acoustical spray- and plasterwork		

* These details are basic principle drawings. This drawing does not function as or will replace any execution drawings.
The client or contractor is responsible for the correct application of the product. All dimensions need to be checked by client or contractor.

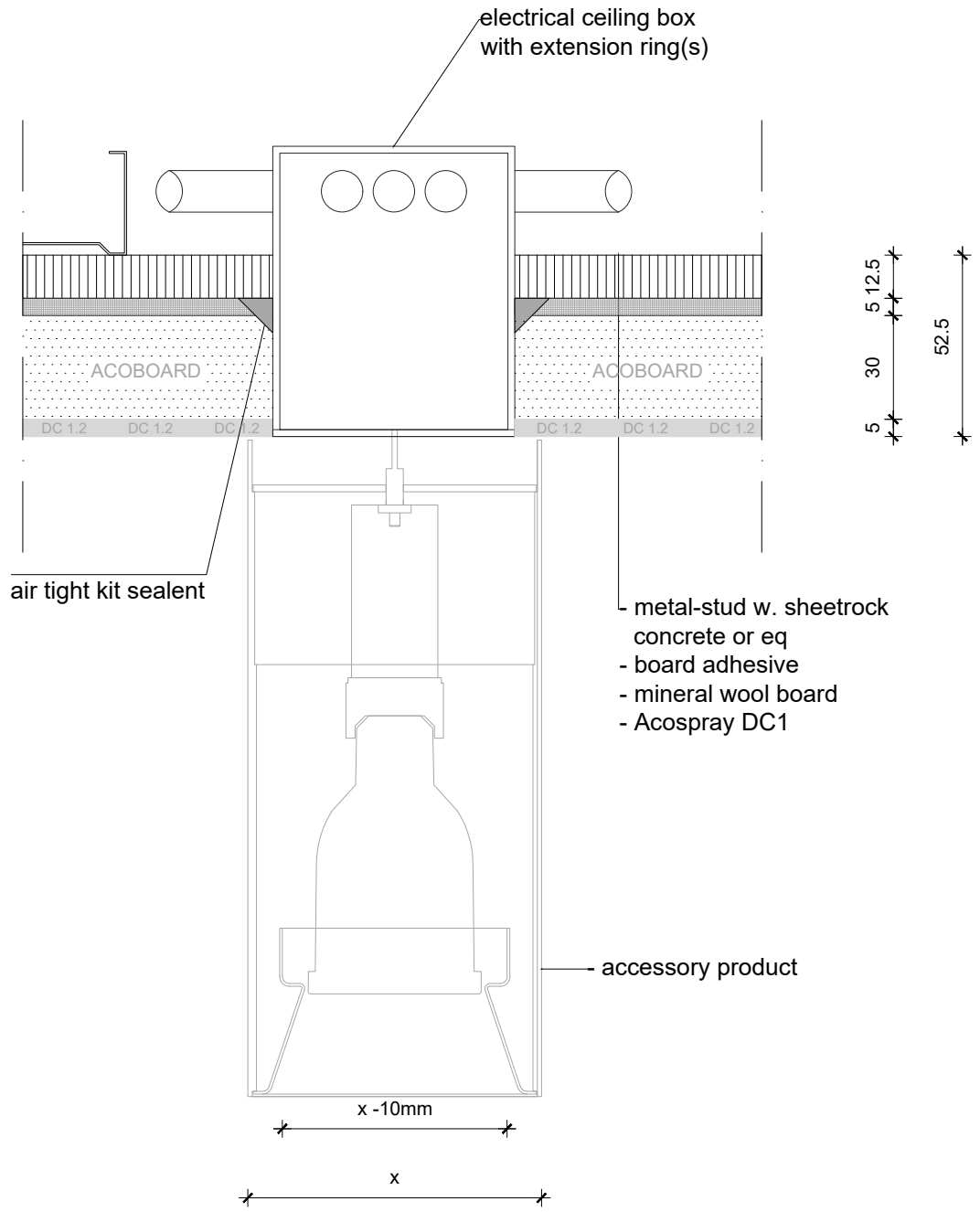


NOTE:

- Acosorb products always need to be applied accordingly to the instructions by Acosorb on clean, dry and non expanding surfaces like concrete, gypsum or eq
Dimensions of profiles and other products depends on the applied thickness of Acosorb product.


Product:	ACOSPRAY DC 1 2.0 CEILING SURFACE MOUNTED	Date:	V1.0 2019	info@acosorb.com
Scale:	1:2	Drawn by:	ACOSORB	WWW.ACOSORB.COM
Papersize:	A4	 seamless acoustical spray- and plasterwork		

* These details are basic principle drawings. This drawing does not function as or will replace any execution drawings.
The client or contractor is responsible for the correct application of the product. All dimensions need to be checked by client or contractor.

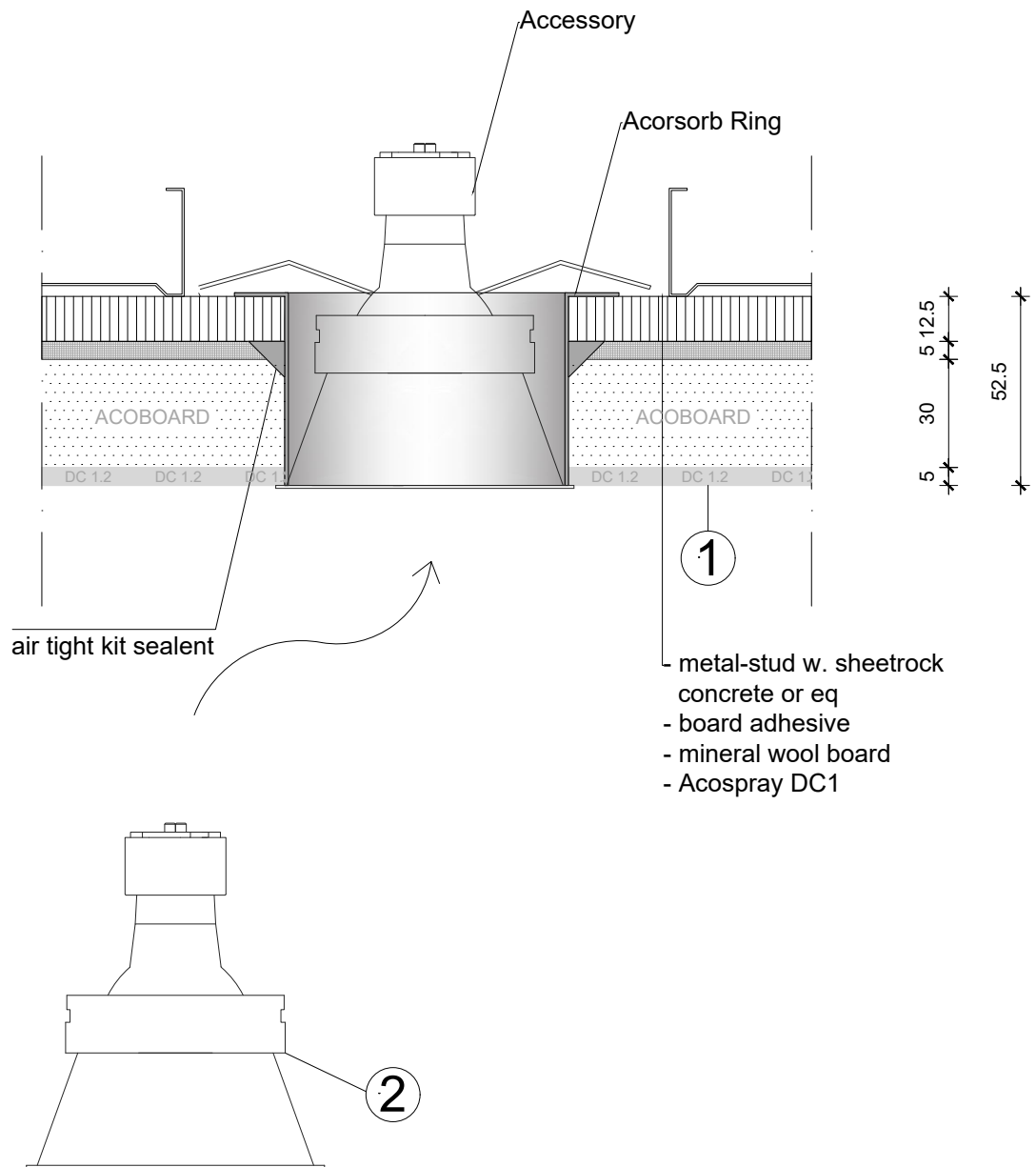


NOTE:

- Acosorb products always need to be applied accordingly to the instructions by Acosorb on clean, dry and non expanding surfaces like concrete, gypsum or eq
Dimensions of profiles and other products depends on the applied thickness of Acosorb product.

Product:	ACOSPRAY DC 1 2.0 ELECTRICAL CEILING BOX	Date:	V1.0 2019	info@acosorb.com
Scale:	1:2	Drawn by:	ACOSORB	WWW.ACOSORB.COM
Papersize:	A4	 seamless acoustical spray- and plasterwork		


* These details are basic principle drawings. This drawing does not function as or will replace any execution drawings.
The client or contractor is responsible for the correct application of the product. All dimensions need to be checked by client or contractor.



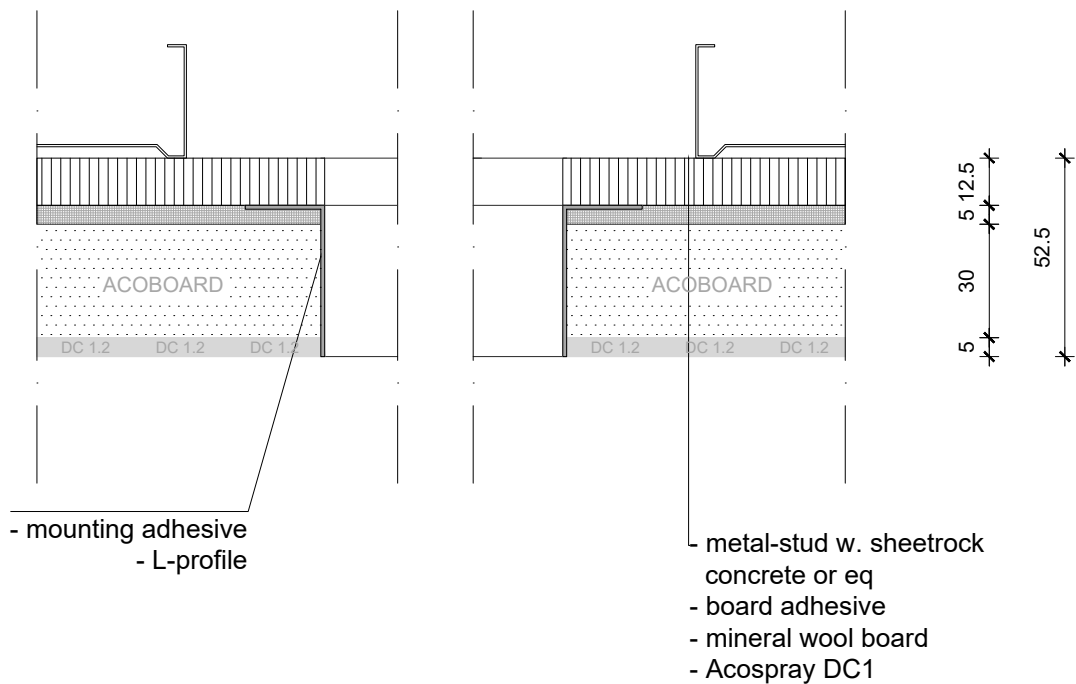
1 - spray ceiling
2 - place accessory

NOTE:

- Acosorb products always need to be applied accordingly to the instructions by Acosorb on clean, dry and non expanding surfaces like concrete, gypsum or eq
Dimensions of profiles and other products depends on the applied thickness of Acosorb product.


Product:	ACOSPRAY DC 1 2.0 ACOSORB RING	Date:	V1.0 2019	info@acosorb.com
Scale:	1:2	Drawn by:	ACOSORB	WWW.ACOSORB.COM
Papersize:	A4	 seamless acoustical spray- and plasterwork		

* These details are basic principle drawings. This drawing does not function as or will replace any execution drawings. The client or contractor is responsible for the correct application of the product. All dimensions need to be checked by client or contractor.

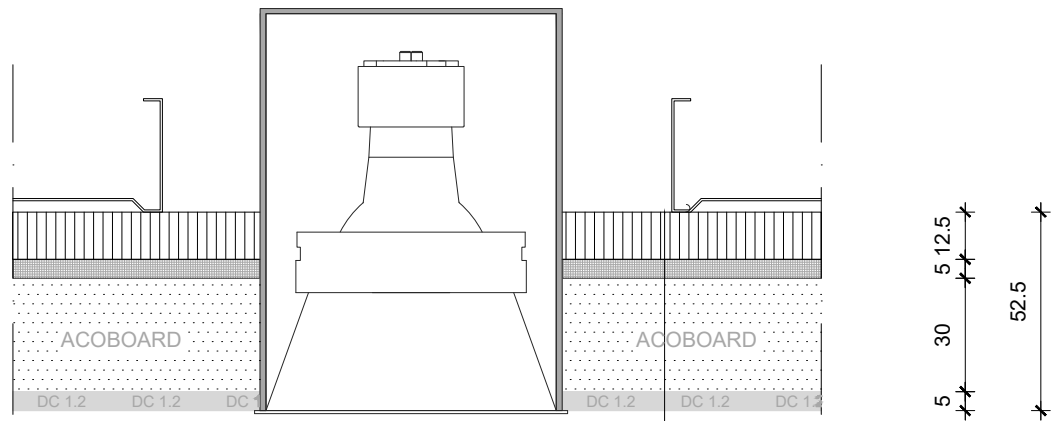


NOTE:

- Acosorb products always need to be applied accordingly to the instructions by Acosorb on clean, dry and non expanding surfaces like concrete, gypsum or eq
Dimensions of profiles and other products depends on the applied thickness of Acosorb product.

Product:	ACOSPRAY DC 1 2.0 RECTANGULAR OPENING	Date:	V1.0 2019	info@acosorb.com
Scale:	1:2	Drawn by:	ACOSORB	WWW.ACOSORB.COM
Papersize:	A4			 seamless acoustical spray- and plasterwork

* These details are basic principle drawings. This drawing does not function as or will replace any execution drawings.
The client or contractor is responsible for the correct application of the product. All dimensions need to be checked by client or contractor.



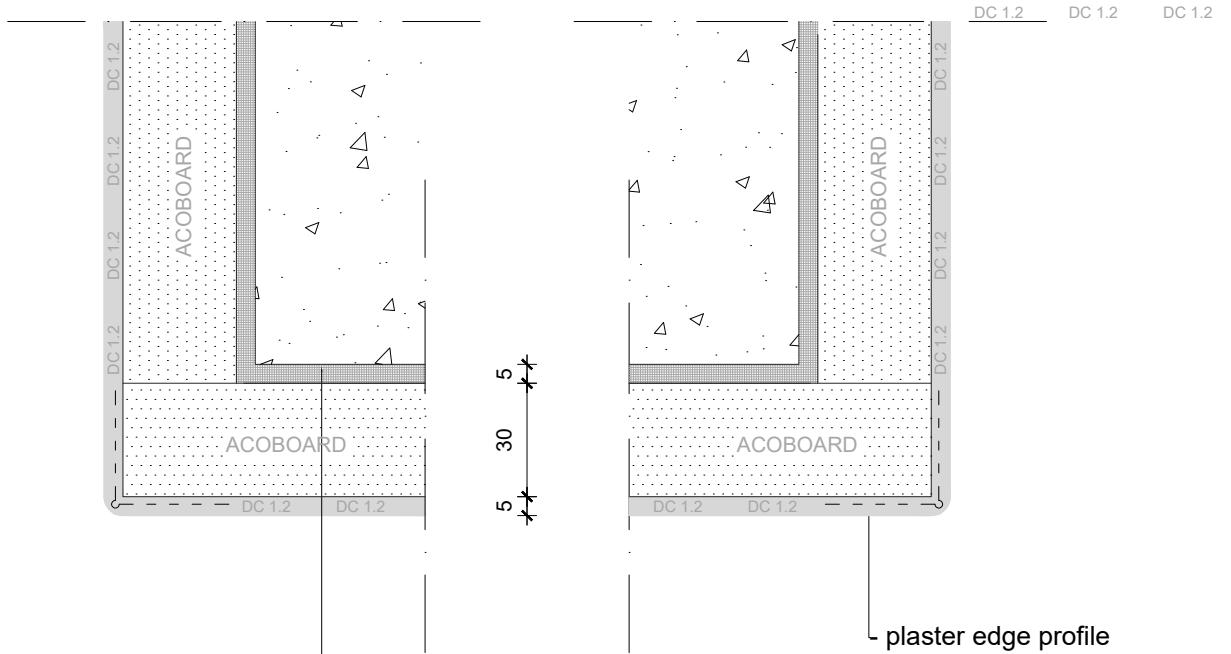
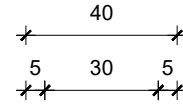
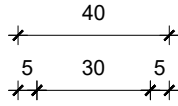
- metal-stud w. sheetrock
concrete or eq
- board adhesive
- mineral wool board
- Acospray DC1

NOTE:

- Acosorb products always need to be applied accordingly to the instructions by Acosorb on clean, dry and non expanding surfaces like concrete, gypsum or eq
 Dimensions of profiles and other products depends on the applied thickness of Acosorb product.

Product:	ACOSPRAY DC 1 2.0 CEILING Item RECESSED	Date:	V1.0 2019	info@acosorb.com	
Scale:	1:2	Drawn by:	ACOSORB	WWW.ACOSORB.COM	
Papersize:	A4				


* These details are basic principle drawings. This drawing does not function as or will replace any execution drawings.
 The client or contractor is responsible for the correct application of the product. All dimensions need to be checked by client or contractor.



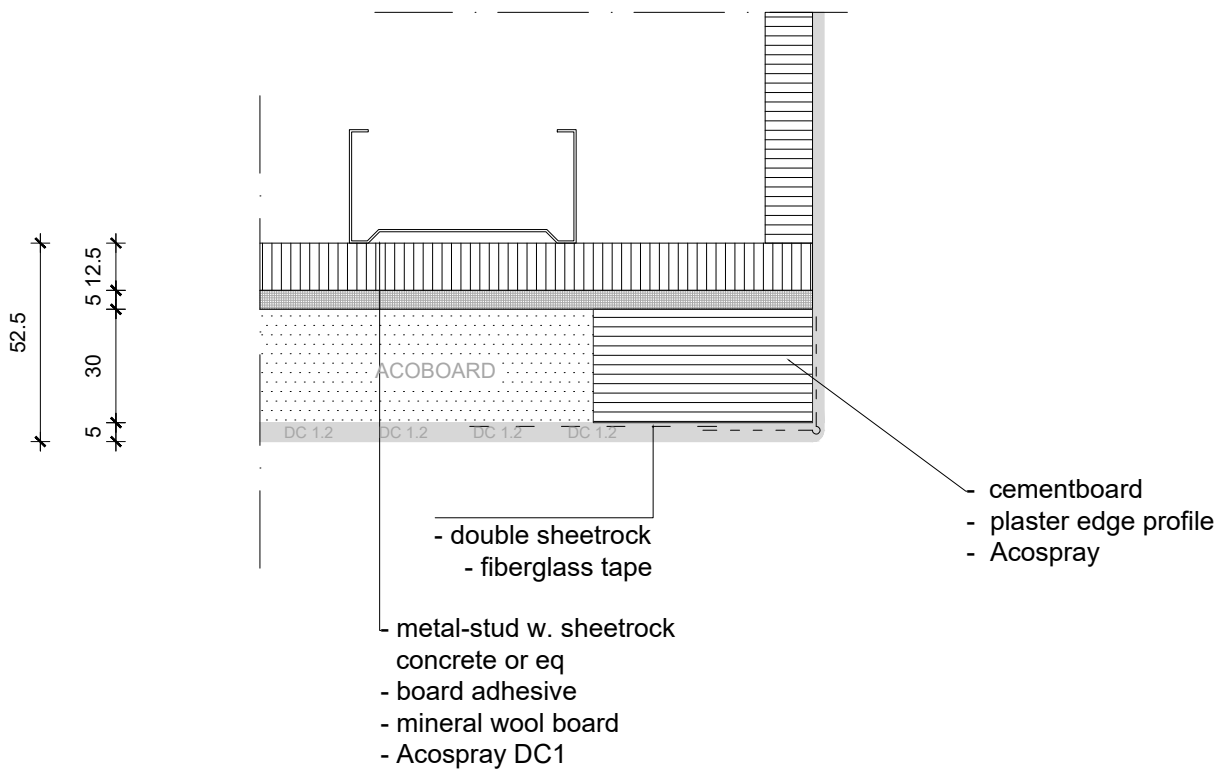
- metal-stud w. sheetrock
concrete or eq
- board adhesive
- mineral wool board
- Acospray DC1

NOTE:

- Acosorb products always need to be applied accordingly to the instructions by Acosorb on clean, dry and non expanding surfaces like concrete, gypsum or eq
 Dimensions of profiles and other products depends on the applied thickness of Acosorb product.


Product:	ACOSPRAY DC 1 2.0 BULKHEAD EDGE	Date:	V1.0 2019	info@acosorb.com
Scale:	1:2	Drawn by:	ACOSORB	WWW.ACOSORB.COM
Papersize:	A4	 seamless acoustical spray- and plasterwork		

* These details are basic principle drawings. This drawing does not function as or will replace any execution drawings.
 The client or contractor is responsible for the correct application of the product. All dimensions need to be checked by client or contractor.

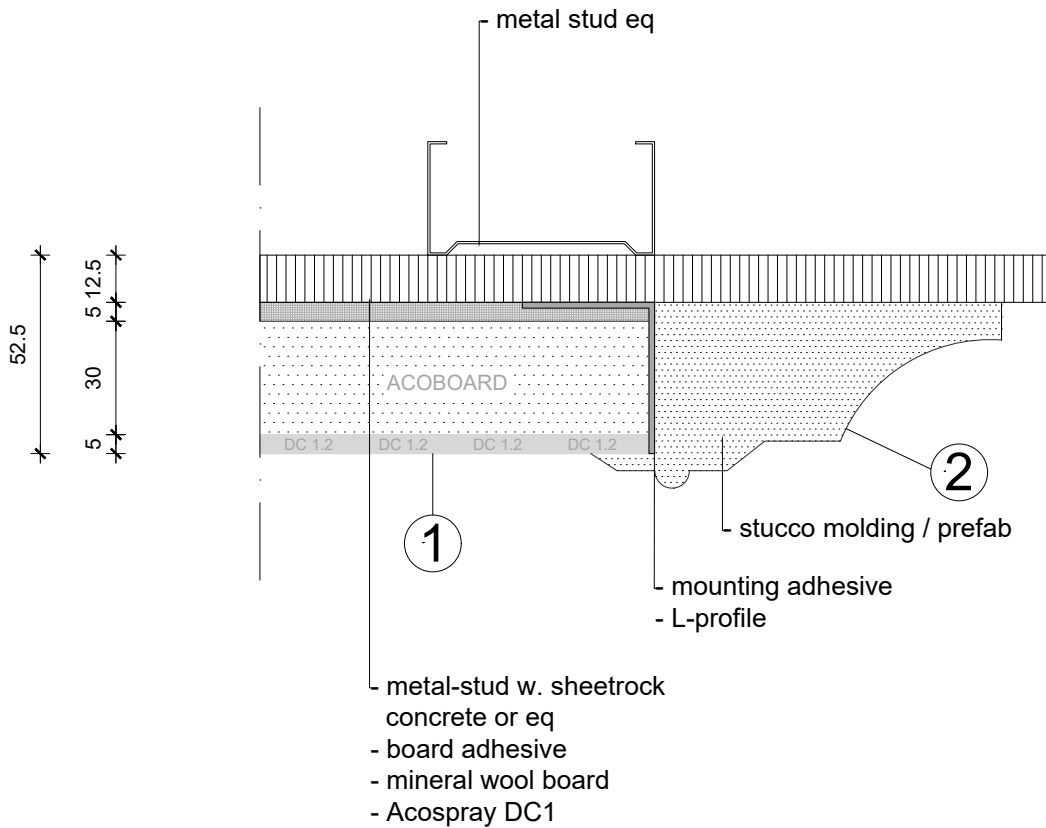


NOTE:

- Acosorb products always need to be applied accordingly to the instructions by Acosorb on clean, dry and non expanding surfaces like concrete, gypsum or eq
 Dimensions of profiles and other products depends on the applied thickness of Acosorb product.

Product:	ACOSPRAY DC 1 2.0 ATRIUM / EDGE	Date:	V1.0 2019	info@acosorb.com
Scale:	1:2	Drawn by:	ACOSORB	WWW.ACOSORB.COM
Papersize:	A4			 seamless acoustical spray- and plasterwork


* These details are basic principle drawings. This drawing does not function as or will replace any execution drawings.
 The client or contractor is responsible for the correct application of the product. All dimensions need to be checked by client or contractor.



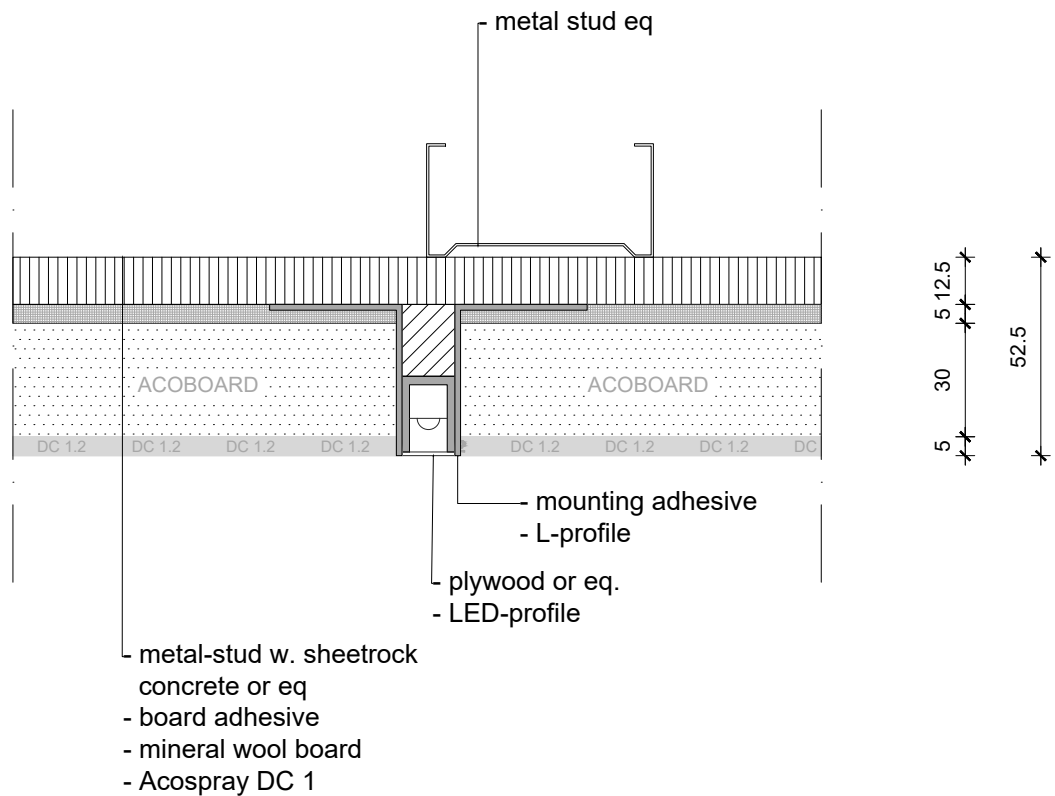
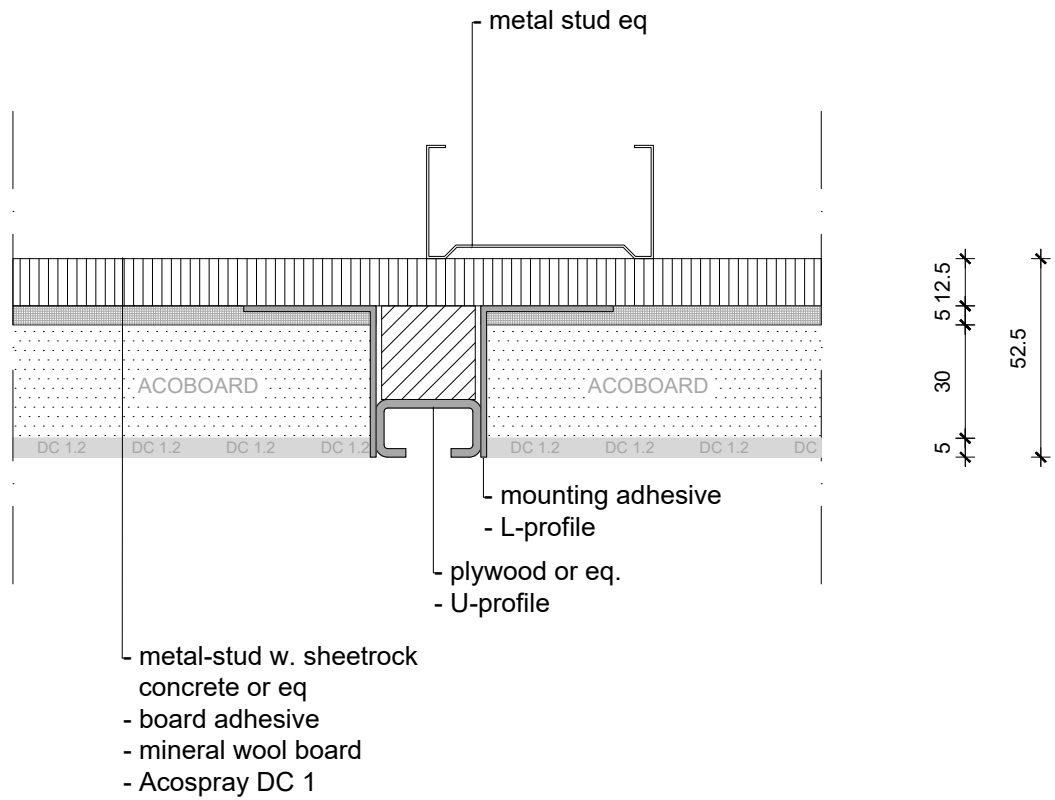
- | |
|--------------------------|
| 1 - spray ceiling |
| 2 - mount stucco-profile |

NOTE:

- Acosorb products always need to be applied accordingly to the instructions by Acosorb on clean, dry and non expanding surfaces like concrete, gypsum or eq
 Dimensions of profiles and other products depends on the applied thickness of Acosorb product.


Product:	ACOSPRAY DC 1 2.0 STUCCO MOLDING / PREFAB	Date:	V1.0 2019	info@acosorb.com
Scale:	1:2	Drawn by:	ACOSORB	WWW.ACOSORB.COM
Papersize:	A4	 seamless acoustical spray- and plasterwork		

* These details are basic principle drawings. This drawing does not function as or will replace any execution drawings.
 The client or contractor is responsible for the correct application of the product. All dimensions need to be checked by client or contractor.

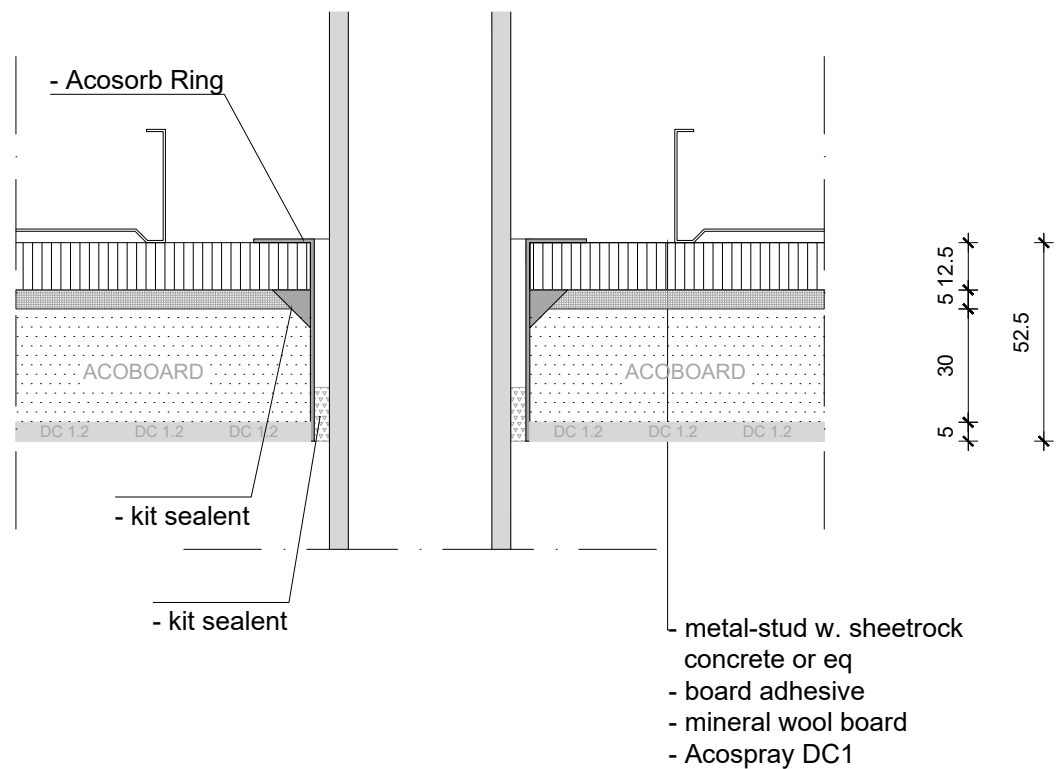


NOTE:

- Acosorb products always need to be applied accordingly to the instructions by Acosorb on clean, dry and non expanding surfaces like concrete, gypsum or eq
Dimensions of profiles and other products depends on the applied thickness of Acosorb product.


Product:	ACOSPRAY DC 1 2.0 U-PROFILE, LIGHT/LED LINE	Date:	V1.0 2019	info@acosorb.com
Scale:	1:2	Drawn by:	ACOSORB	WWW.ACOSORB.COM
Papersize:	A4			 seamless acoustical spray- and plasterwork

* These details are basic principle drawings. This drawing does not function as or will replace any execution drawings.
The client or contractor is responsible for the correct application of the product. All dimensions need to be checked by client or contractor.

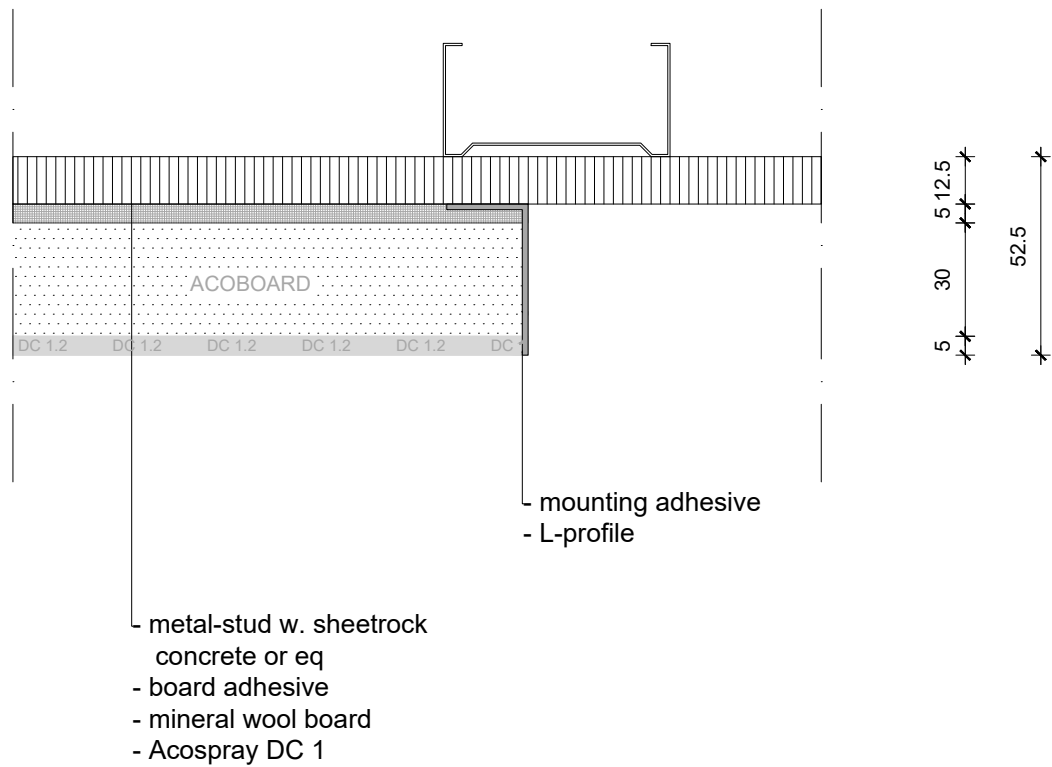


NOTE:

- Acosorb products always need to be applied accordingly to the instructions by Acosorb on clean, dry and non expanding surfaces like concrete, gypsum or eq
Dimensions of profiles and other products depends on the applied thickness of Acosorb product.


Product:	ACOSPRAY DC 1 2.0 TUBE TRANSIT	Date:	V1.0 2019	info@acosorb.com
Scale:	1:2	Drawn by:	ACOSORB	WWW.ACOSORB.COM
Papersize:	A4			 seamless acoustical spray- and plasterwork

* These details are basic principle drawings. This drawing does not function as or will replace any execution drawings.
The client or contractor is responsible for the correct application of the product. All dimensions need to be checked by client or contractor.

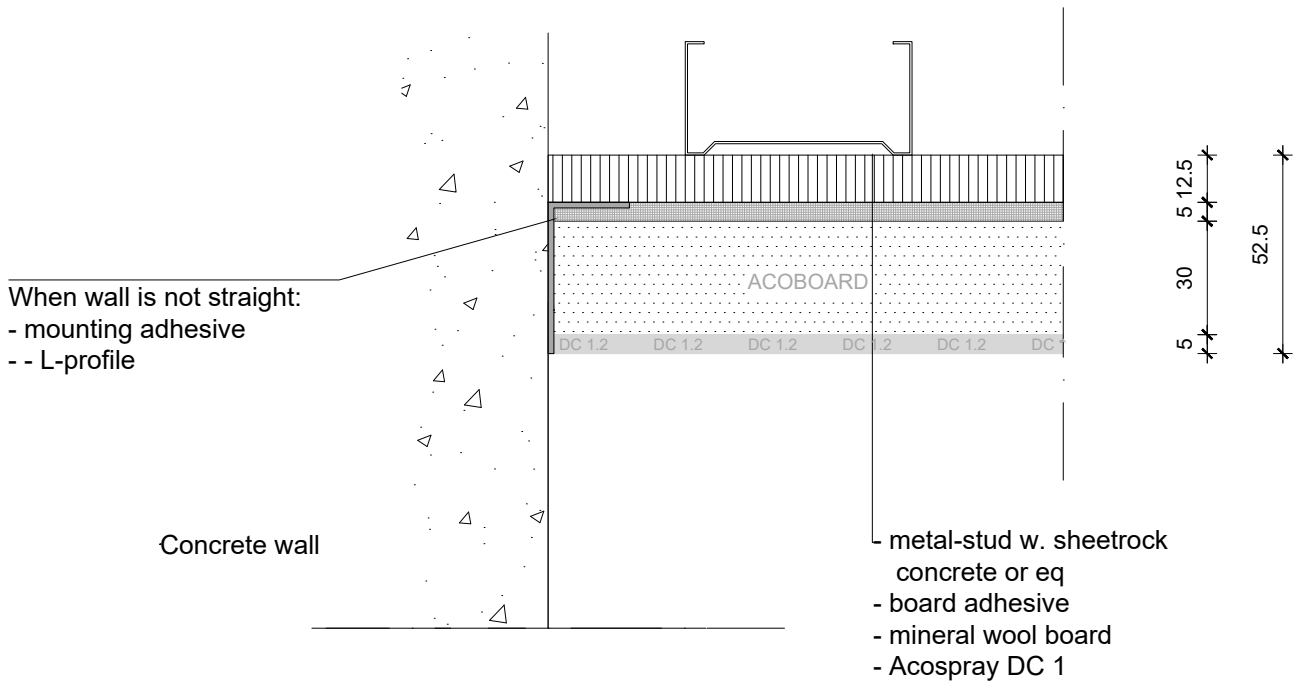
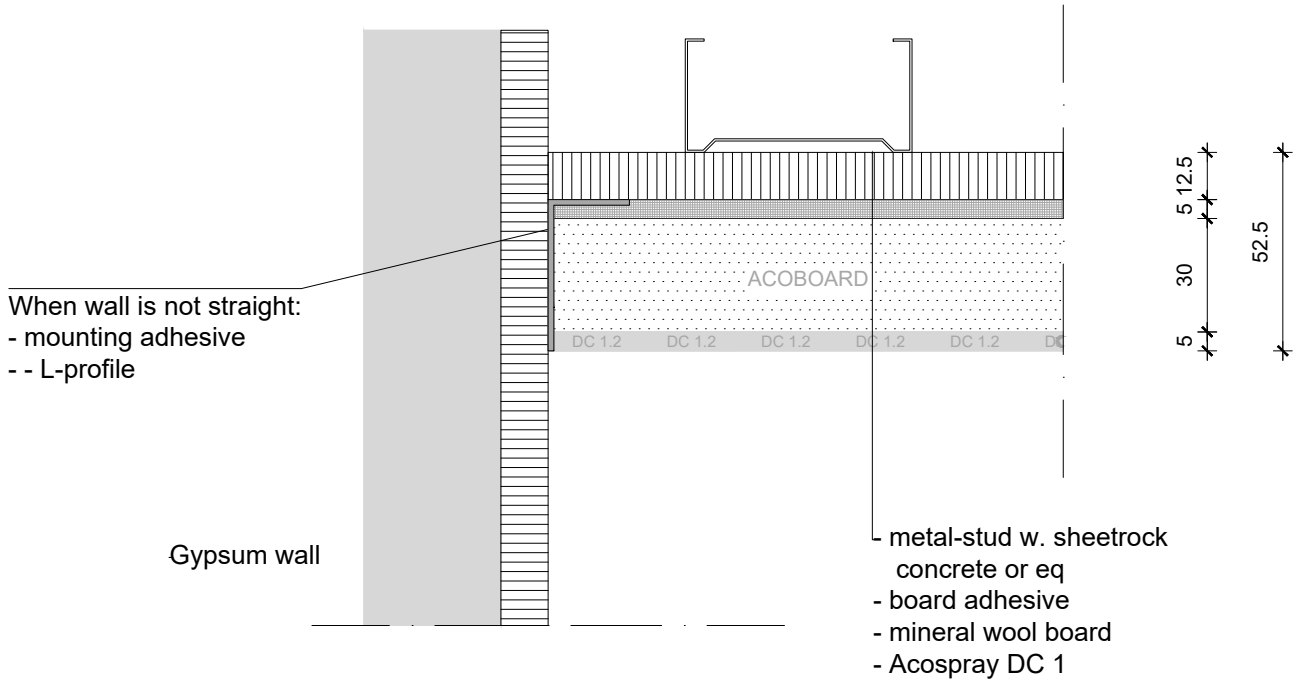


NOTE:

- Acosorb products always need to be applied accordingly to the instructions by Acosorb on clean, dry and non expanding surfaces like concrete, gypsum or eq
 Dimensions of profiles and other products depends on the applied thickness of Acosorb product.


Product:	ACOSPRAY DC1 2.0 STANDARD ENDING	Date:	V1.0 2019	info@acosorb.com
Scale:	1:2	Drawn by:	ACOSORB	WWW.ACOSORB.COM
Papersize:	A4			 seamless acoustical spray- and plasterwork

* These details are basic principle drawings. This drawing does not function as or will replace any execution drawings.
 The client or contractor is responsible for the correct application of the product. All dimensions need to be checked by client or contractor.

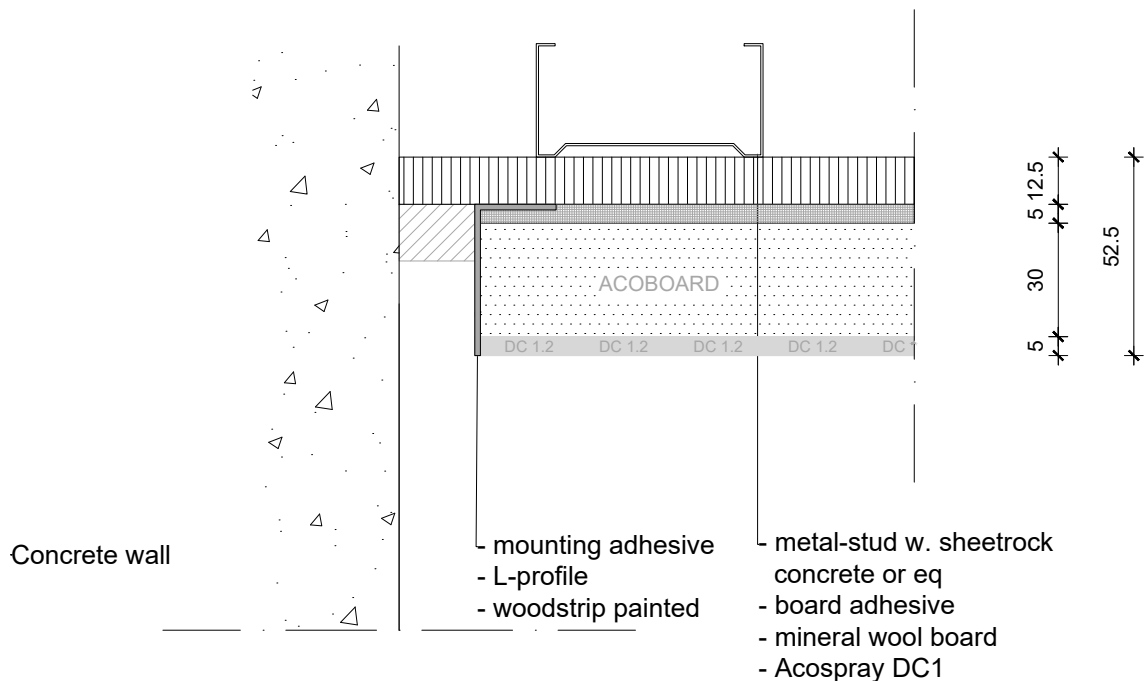
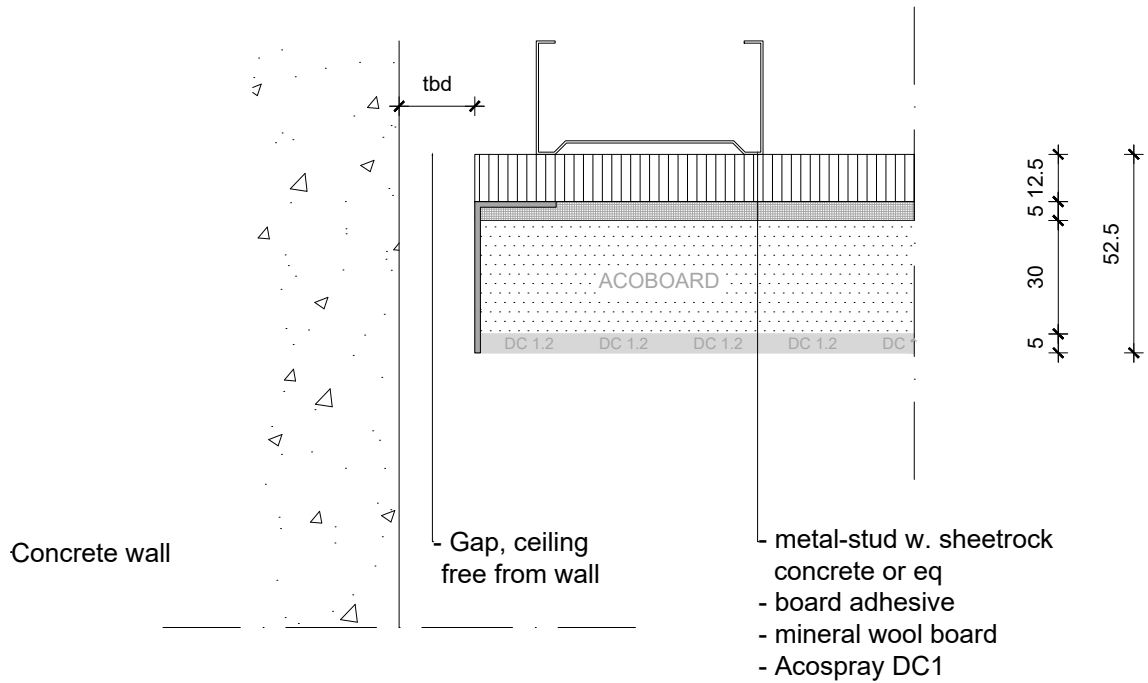


NOTE:

- Acosorb products always need to be applied accordingly to the instructions by Acosorb on clean, dry and non expanding surfaces like concrete, gypsum or eq
 Dimensions of profiles and other products depends on the applied thickness of Acosorb product.


Product:	ACOSPRAY DC 1 2.0 WALL CONNECTION	Date:	V1.0 2019	info@acosorb.com
Scale:	1:2	Drawn by:	ACOSORB	WWW.ACOSORB.COM
Papersize:	A4			 seamless acoustical spray- and plasterwork

* These details are basic principle drawings. This drawing does not function as or will replace any execution drawings.
 The client or contractor is responsible for the correct application of the product. All dimensions need to be checked by client or contractor.

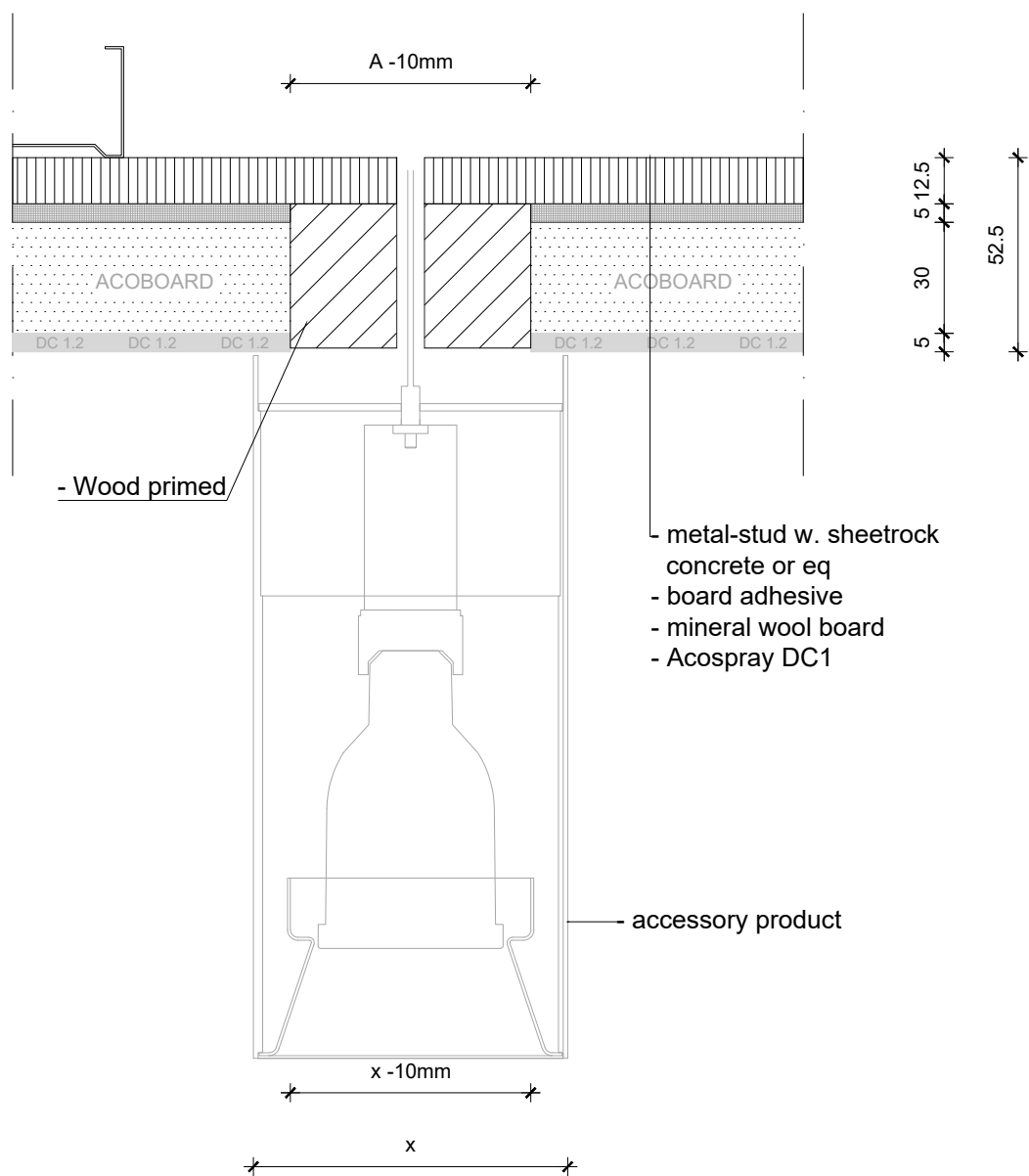


NOTE:

- Acosorb products always need to be applied accordingly to the instructions by Acosorb on clean, dry and non expanding surfaces like concrete, gypsum or eq
Dimensions of profiles and other products depends on the applied thickness of Acosorb product.


Product:	ACOSPRAY DC 1 2.0 WALL/SHADOW JOINT	Date:	V1.0 2019	info@acosorb.com
Scale:	1:2	Drawn by:	ACOSORB	WWW.ACOSORB.COM
Papersize:	A4	 seamless acoustical spray- and plasterwork		

* These details are basic principle drawings. This drawing does not function as or will replace any execution drawings.
The client or contractor is responsible for the correct application of the product. All dimensions need to be checked by client or contractor.

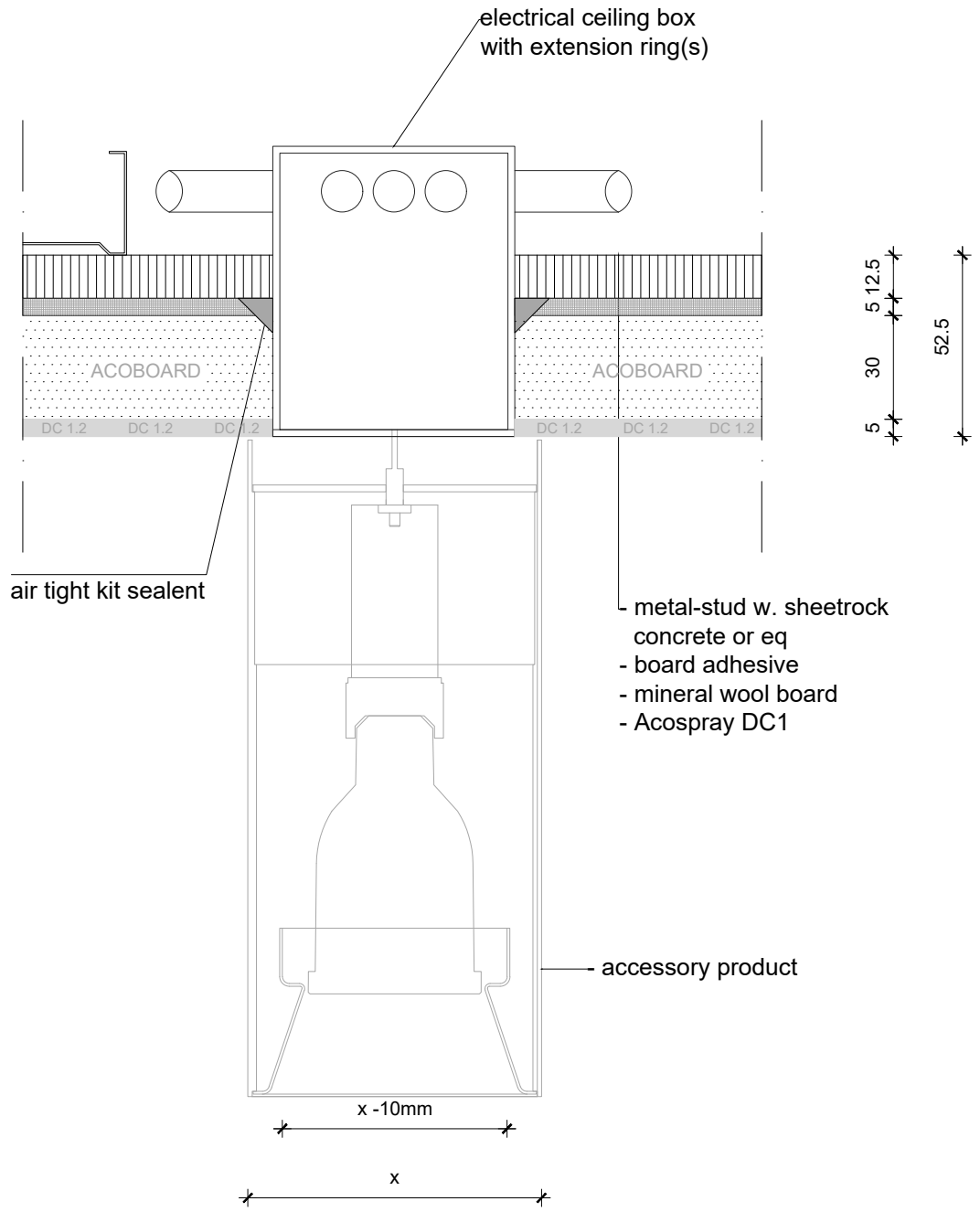


NOTE:

- Acosorb products always need to be applied accordingly to the instructions by Acosorb on clean, dry and non expanding surfaces like concrete, gypsum or eq
Dimensions of profiles and other products depends on the applied thickness of Acosorb product.


Product:	ACOSPRAY DC 1 2.0 CEILING SURFACE MOUNTED	Date:	V1.0 2019	info@acosorb.com
Scale:	1:2	Drawn by:	ACOSORB	WWW.ACOSORB.COM
Papersize:	A4	 seamless acoustical spray- and plasterwork		

* These details are basic principle drawings. This drawing does not function as or will replace any execution drawings.
The client or contractor is responsible for the correct application of the product. All dimensions need to be checked by client or contractor.

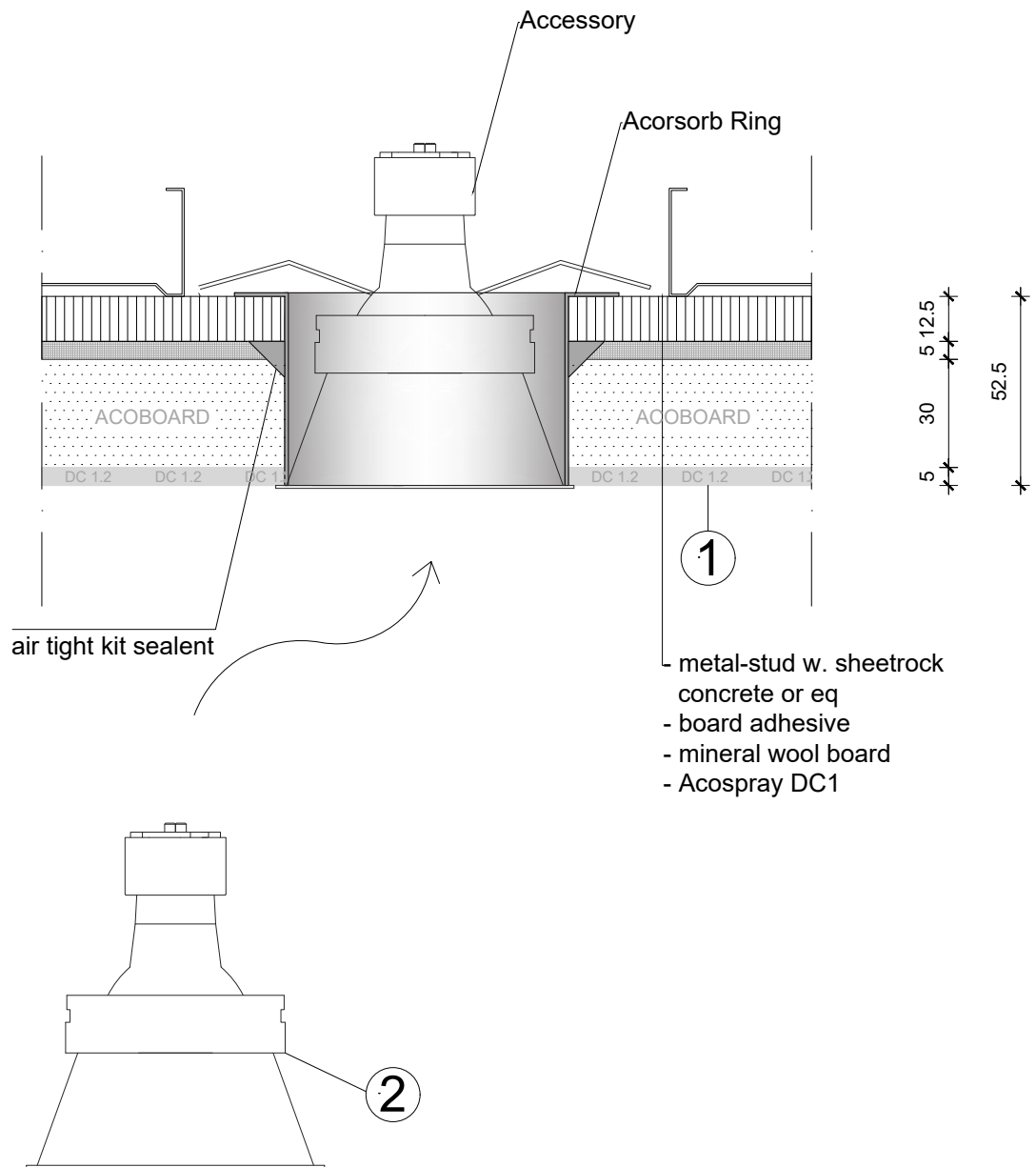


NOTE:

- Acosorb products always need to be applied accordingly to the instructions by Acosorb on clean, dry and non expanding surfaces like concrete, gypsum or eq
Dimensions of profiles and other products depends on the applied thickness of Acosorb product.

Product:	ACOSPRAY DC 1 2.0 ELECTRICAL CEILING BOX	Date:	V1.0 2019	info@acosorb.com
Scale:	1:2	Drawn by:	ACOSORB	WWW.ACOSORB.COM
Papersize:	A4	 seamless acoustical spray- and plasterwork		


* These details are basic principle drawings. This drawing does not function as or will replace any execution drawings. The client or contractor is responsible for the correct application of the product. All dimensions need to be checked by client or contractor.



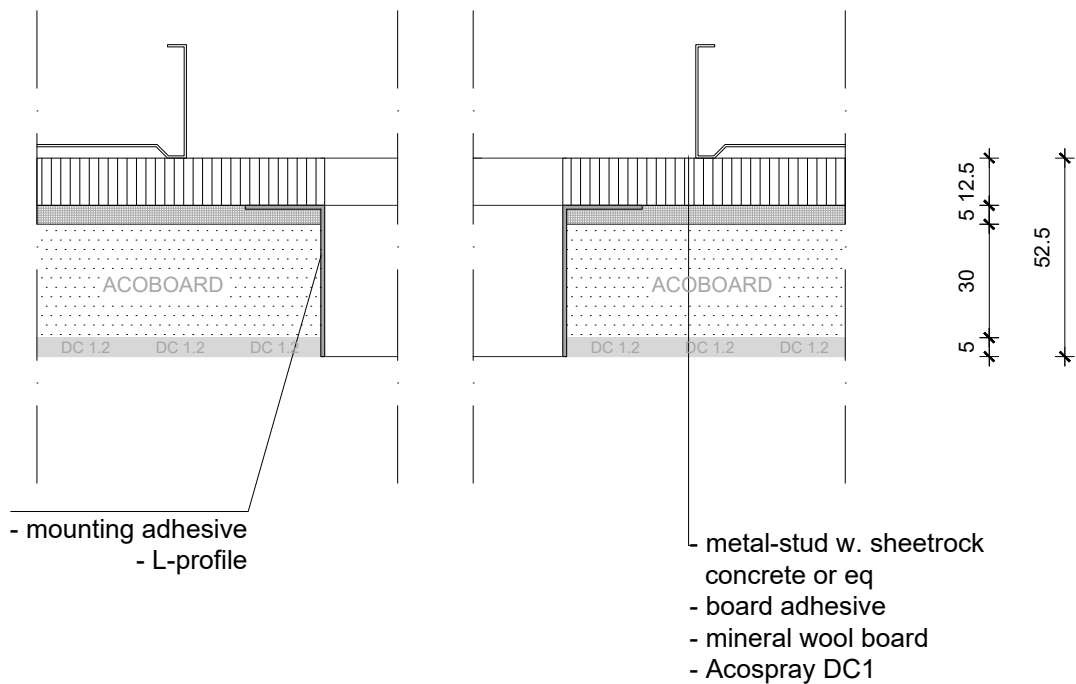
1 - spray ceiling
2 - place accessory

NOTE:

- Acoresorb products always need to be applied accordingly to the instructions by Acoresorb on clean, dry and non expanding surfaces like concrete, gypsum or eq
Dimensions of profiles and other products depends on the applied thickness of Acoresorb product.


Product:	ACOSPRAY DC 1 2.0 ACOSORB RING	Date:	V1.0 2019	info@acosorb.com
Scale:	1:2	Drawn by:	ACOSORB	WWW.ACOSORB.COM
Papersize:	A4	 seamless acoustical spray- and plasterwork		

* These details are basic principle drawings. This drawing does not function as or will replace any execution drawings. The client or contractor is responsible for the correct application of the product. All dimensions need to be checked by client or contractor.

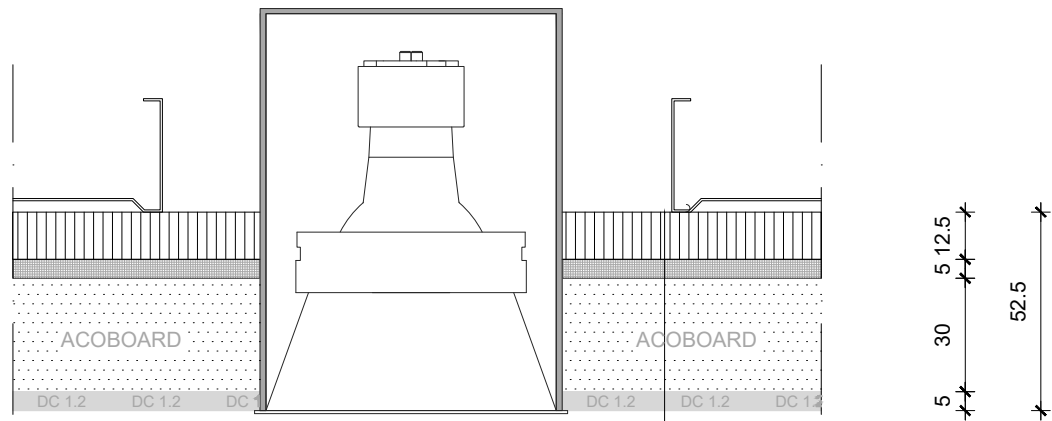


NOTE:

- Acosorb products always need to be applied accordingly to the instructions by Acosorb on clean, dry and non expanding surfaces like concrete, gypsum or eq
Dimensions of profiles and other products depends on the applied thickness of Acosorb product.

Product:	ACOSPRAY DC 1 2.0 RECTANGULAR OPENING	Date:	V1.0 2019	info@acosorb.com
Scale:	1:2	Drawn by:	ACOSORB	WWW.ACOSORB.COM
Papersize:	A4			 seamless acoustical spray- and plasterwork

* These details are basic principle drawings. This drawing does not function as or will replace any execution drawings.
The client or contractor is responsible for the correct application of the product. All dimensions need to be checked by client or contractor.



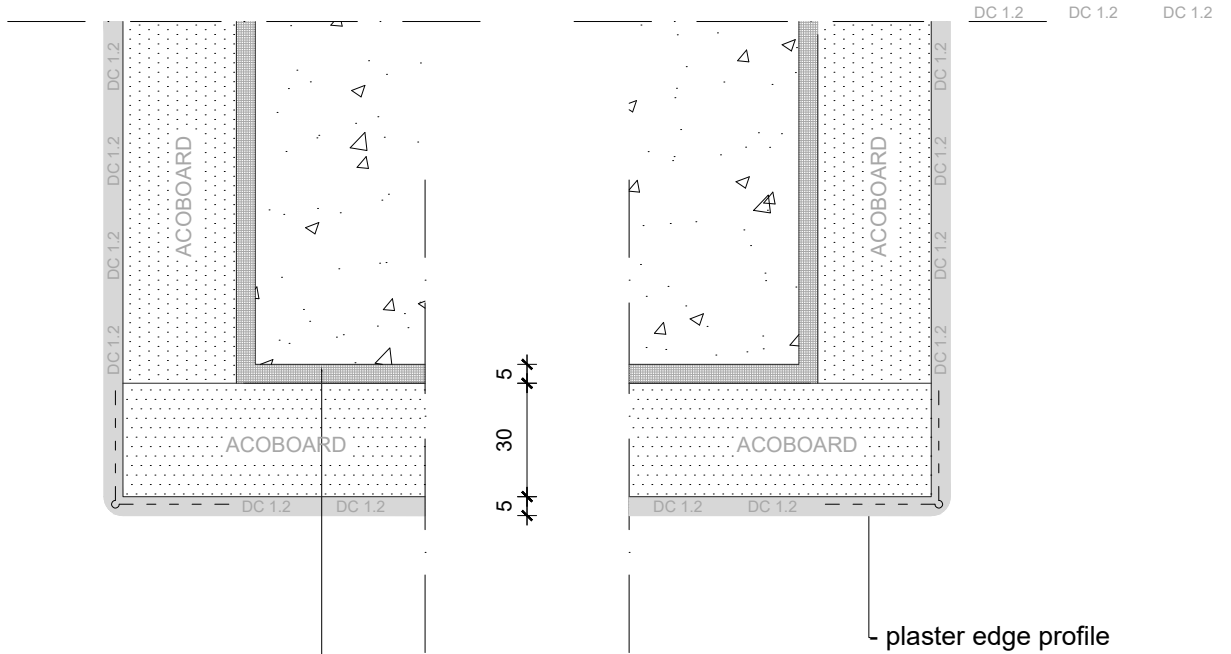
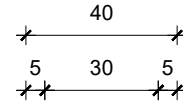
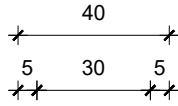
- metal-stud w. sheetrock
concrete or eq
- board adhesive
- mineral wool board
- Acospray DC1

NOTE:

- Acosorb products always need to be applied accordingly to the instructions by Acosorb on clean, dry and non expanding surfaces like concrete, gypsum or eq
 Dimensions of profiles and other products depends on the applied thickness of Acosorb product.

Product:	ACOSPRAY DC 1 2.0 CEILING Item RECESSED	Date:	V1.0 2019	info@acosorb.com	
Scale:	1:2	Drawn by:	ACOSORB	WWW.ACOSORB.COM	
Papersize:	A4				


* These details are basic principle drawings. This drawing does not function as or will replace any execution drawings.
 The client or contractor is responsible for the correct application of the product. All dimensions need to be checked by client or contractor.



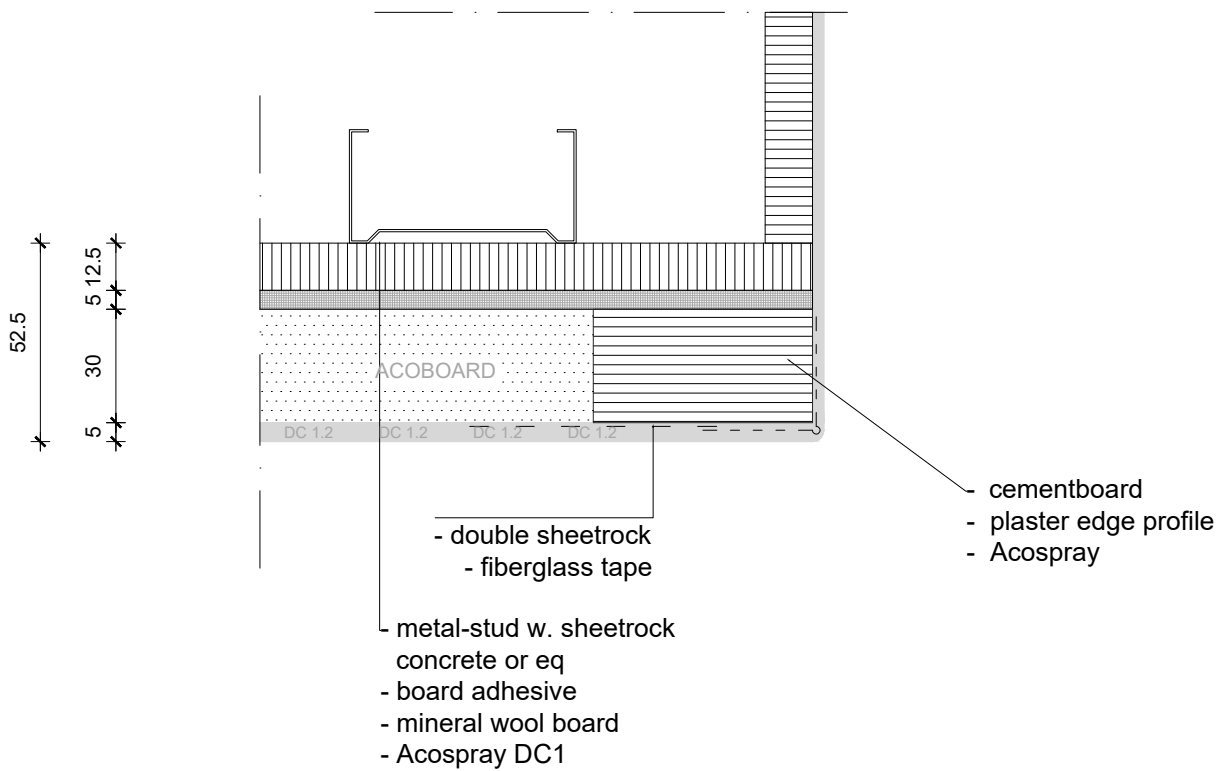
- metal-stud w. sheetrock
- concrete or eq
- board adhesive
- mineral wool board
- Acospray DC1

NOTE:

- Acosorb products always need to be applied accordingly to the instructions by Acosorb on clean, dry and non expanding surfaces like concrete, gypsum or eq
 Dimensions of profiles and other products depends on the applied thickness of Acosorb product.


Product:	ACOSPRAY DC 1 2.0 BULKHEAD EDGE	Date:	V1.0 2019	info@acosorb.com
Scale:	1:2	Drawn by:	ACOSORB	WWW.ACOSORB.COM
Papersize:	A4			 seamless acoustical spray- and plasterwork

* These details are basic principle drawings. This drawing does not function as or will replace any execution drawings.
 The client or contractor is responsible for the correct application of the product. All dimensions need to be checked by client or contractor.

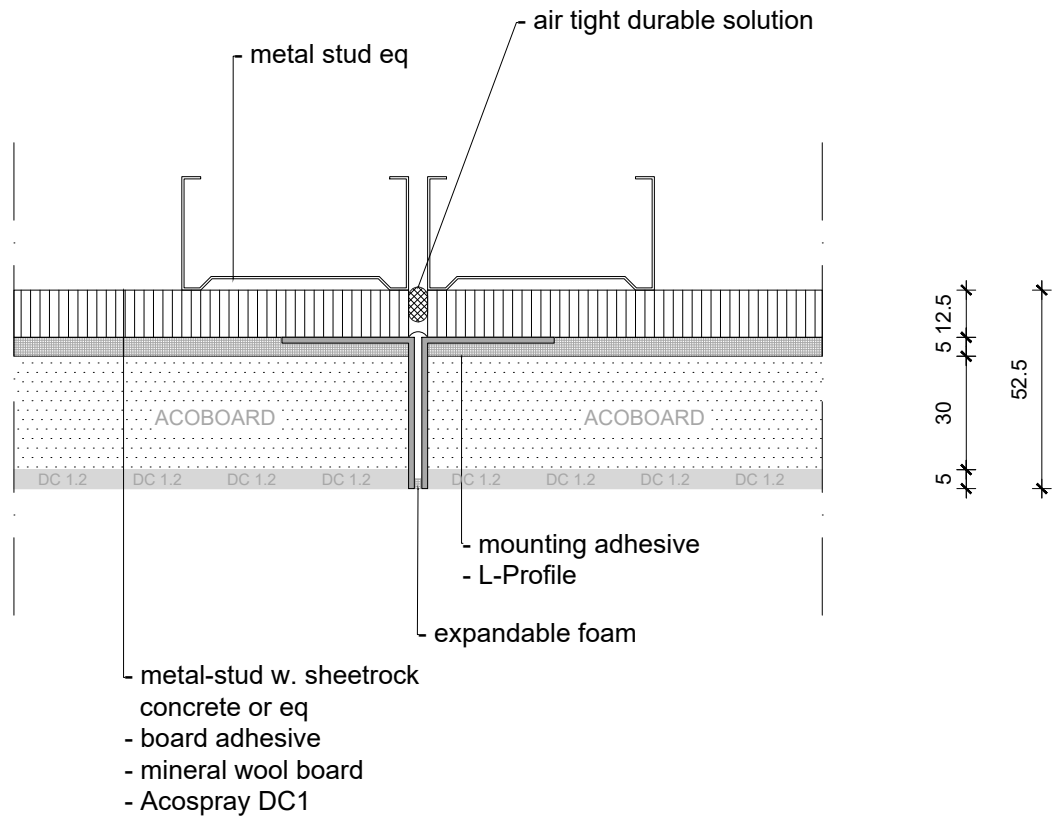


NOTE:

- Acosorb products always need to be applied accordingly to the instructions by Acosorb on clean, dry and non expanding surfaces like concrete, gypsum or eq
 Dimensions of profiles and other products depends on the applied thickness of Acosorb product.


Product:	ACOSPRAY DC 1 2.0 ATRIUM / EDGE	Date:	V1.0 2019	info@acosorb.com
Scale:	1:2	Drawn by:	ACOSORB	WWW.ACOSORB.COM
Papersize:	A4			 seamless acoustical spray- and plasterwork

* These details are basic principle drawings. This drawing does not function as or will replace any execution drawings.
 The client or contractor is responsible for the correct application of the product. All dimensions need to be checked by client or contractor.

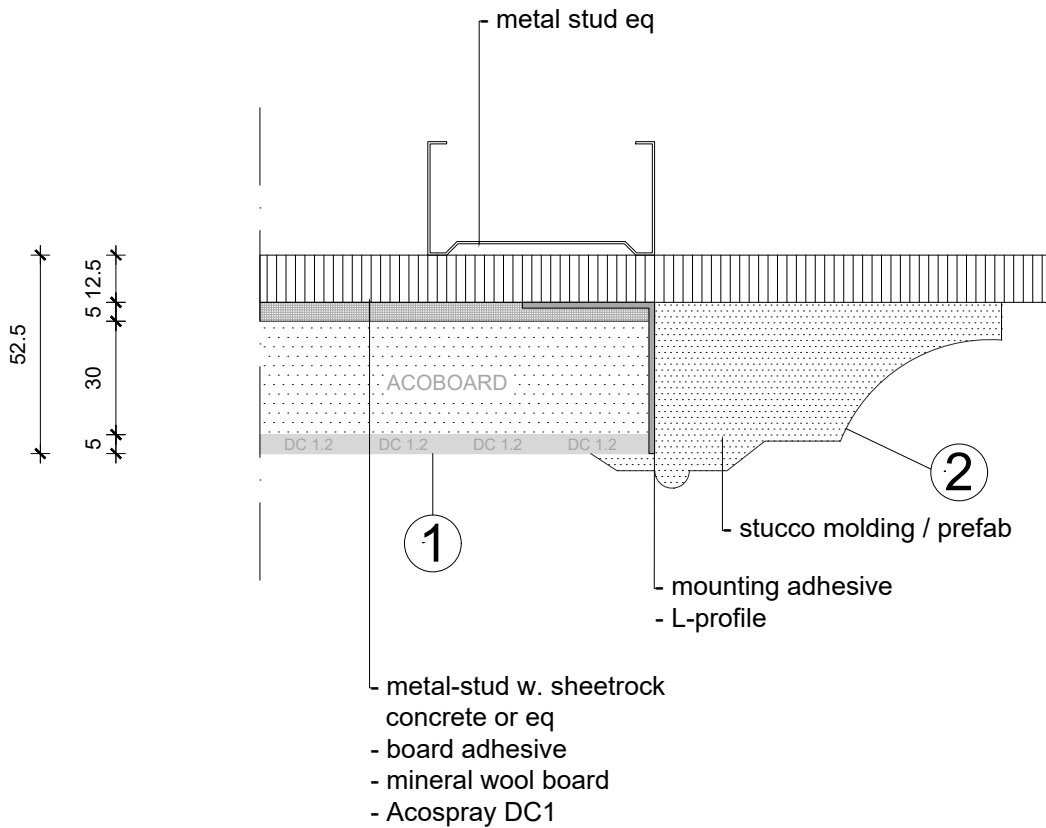


NOTE:

- Acosorb products always need to be applied accordingly to the instructions by Acosorb on clean, dry and non expanding surfaces like concrete, gypsum or eq
Dimensions of profiles and other products depends on the applied thickness of Acosorb product.

Product:	ACOSPRAY DC 1 2.0 EXPANSION JOINT	Date:	V1.0 2019	info@acosorb.com
Scale:	1:2	Drawn by:	ACOSORB	WWW.ACOSORB.COM
Papersize:	A4	 seamless acoustical spray- and plasterwork		


* These details are basic principle drawings. This drawing does not function as or will replace any execution drawings.
The client or contractor is responsible for the correct application of the product. All dimensions need to be checked by client or contractor.



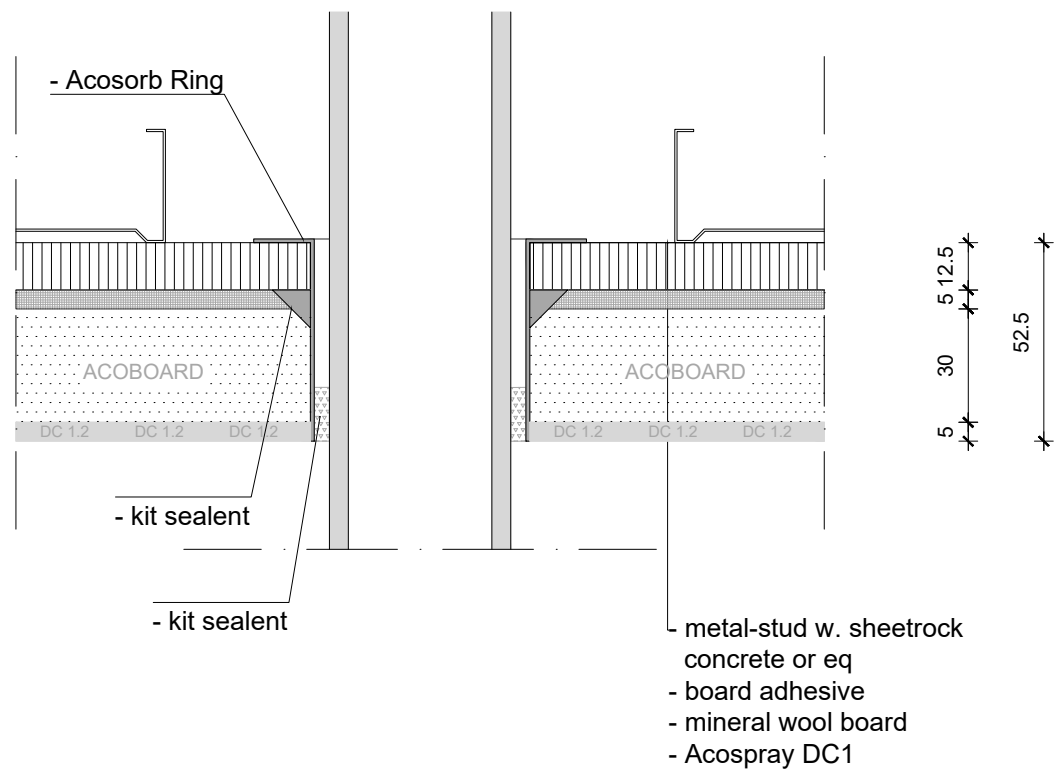
1 - spray ceiling
2 - mount stucco-profile

NOTE:

- Acosorb products always need to be applied accordingly to the instructions by Acosorb on clean, dry and non expanding surfaces like concrete, gypsum or eq
Dimensions of profiles and other products depends on the applied thickness of Acosorb product.


Product:	ACOSPRAY DC 1 2.0 STUCCO MOLDING / PREFAB	Date:	V1.0 2019	info@acosorb.com
Scale:	1:2	Drawn by:	ACOSORB	WWW.ACOSORB.COM
Papersize:	A4			 seamless acoustical spray- and plasterwork

* These details are basic principle drawings. This drawing does not function as or will replace any execution drawings. The client or contractor is responsible for the correct application of the product. All dimensions need to be checked by client or contractor.



NOTE:

- Acorsorb products always need to be applied accordingly to the instructions by Acorsorb on clean, dry and non expanding surfaces like concrete, gypsum or eq
Dimensions of profiles and other products depends on the applied thickness of Acorsorb product.

Product:	ACOSPRAY DC 1 2.0 TUBE TRANSIT	Date:	V1.0 2019	info@acosorb.com
Scale:	1:2	Drawn by:	ACOSORB	WWW.ACOSORB.COM
Papersize:	A4			 seamless acoustical spray- and plasterwork

* These details are basic principle drawings. This drawing does not function as or will replace any execution drawings.
The client or contractor is responsible for the correct application of the product. All dimensions need to be checked by client or contractor.

